

Blue Hexagon Provides Advanced Hardening and Threat Defense in the Cloud for Pacific Dental Services

AGENTLESS CLOUD SECURITY POSTURE MANAGEMENT AND THREAT DEFENSE

Pacific Dental Services (PDS) has a large and diverse cloud deployment, with VMs and workloads coming in many different flavors of Linux and Windows. PDS cloud assets are well protected - they are managed in numerous individual accounts with firewalled VPCs and proper segmentation, adhering to best practices. Furthermore, all the VPCs and workloads are connected to AWS Transit Gateway as VPC attachments, making for a truly hyperscale cloud deployment. PDS had previously considered agent-based monitoring of their cloud assets and microservices. However, they quickly realized that platform coverage was limited with the agent-based solution, deploying and managing agents would be intrusive and time/labor intensive, and would not provide the comprehensive cloud visibility they were looking for in their security posture. Furthermore, the need to defend against lateral movement of advanced, possibly unknown zero-day, threats was a real concern since the healthcare vertical is a prime target of ransomware that tends to follow valuable data wherever the data goes.

DEEP LEARNING POWERED CLOUD SECURITY

“There were a number of security incidents we had earlier, most of which were missed by some of the tools we already had. Blue Hexagon was able to detect those as they came through,” said Nemi George, CISO of Pacific Dental Services. “So, when Blue Hexagon released its cloud-native security solution for AWS, it was a natural choice to protect our AWS infrastructure with Blue Hexagon Deep Learning AI, which is quite possibly the only way to effectively fight against the advanced threat landscape as it pertains to healthcare.” Blue Hexagon provides advanced visibility and threat defense on top of the existing security controls, in a simple agentless fashion. Leveraging VPC Traffic Mirroring at the AWS infrastructure layer, Blue Hexagon scans all network traffic, both North-South and East-West, and analyzes protocols, headers, and payloads in the network traffic to identify malware and malicious adversary threats.

SEAMLESS INTEGRATION INTO HYPERSCALE CLOUD INFRASTRUCTURE

PDS has an increasingly large footprint in AWS, including VPCs containing multi-platform IaaS and PaaS resources, all segmented and inspected through virtual next-gen firewalls. Any new security solution would need to integrate seamlessly with existing infrastructure, provide the breadth and depth of coverage needed for an effective cloud security posture, and deploy with minimal hassle and not require downtime of production workloads. It would also need to provide the breadth and depth of coverage needed for an effective cloud defense. Blue Hexagon checked all the boxes, with its:

- Agentless visibility for all workloads - cross-platform VMs, K8s, and container workloads
- Easy deployment into transit gateway attachment
- Zero downtime deployment through CloudFormation templates



CHALLENGES

- Real-time visibility and security of multi-cloud assets
- Comprehensive coverage across Linux and Windows VMs
- Defense against zero-day threats and lateral movement in large-scale multi-cloud enterprise

SOLUTION

Blue Hexagon Cloud Detection and Response (CNAPP) platform powered by deep learning, for unified multi-cloud hardening and defense

BENEFITS

- Runtime agentless monitoring of all VMs, K8s, and container workloads
- Single dashboard visibility and threat correlation for multi-cloud enterprise
- Seamless deployment with no downtime or performance impact on workloads

INTEGRATIONS

Seamless integration with existing security technology stack such as AWS Security Hub and Lambda to ensure faster response and remediations

ABOUT PACIFIC DENTAL SERVICES®

Founded in 1994, Pacific Dental Services (PDS) is one of the country's leading dental support organizations with over 800 supported dental offices across the United States and plans to expand into several new markets. PDS has been on the Inc. 5000 list of the fastest growing private companies in America 14 times. For more information, visit us at <http://www.pacificdentalservices.com>



CLOUD PRIVACY AND ENCRYPTED TRAFFIC ANALYSIS

As a service provider in the healthcare vertical, data privacy is paramount for PDS. Blue Hexagon’s cloud sensors are deployed securely within the PDS VPC, ensuring the mirrored traffic never leaves PDS’ AWS accounts. Blue Hexagon operates on both decrypted and TLS encrypted traffic to extract valuable security signals while preserving privacy. Blue Hexagon’s unique TLS analysis surfaces basic configuration hygiene issues such as outdated TLS versions or weak cipher suites in use, and identifies known and unknown threats through Deep Learning AI based analysis of the TLS communication patterns to differentiate C&C traffic over TLS from benign TLS communications. Metadata about security findings across the hybrid cloud and on-premises IT infrastructure is consolidated and presented in a single portal for root cause analysis and security finding correlation - across the breadth of infrastructure spanning AWS cloud.

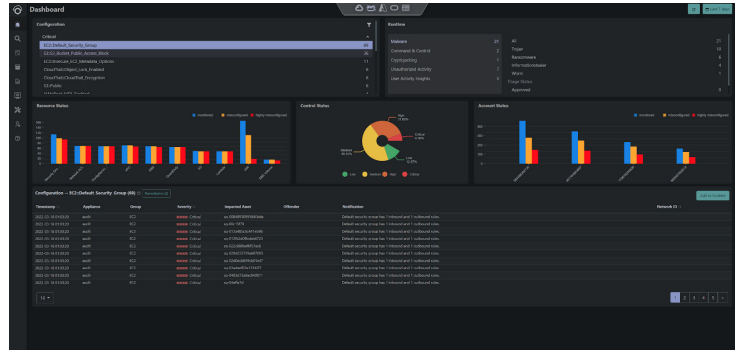
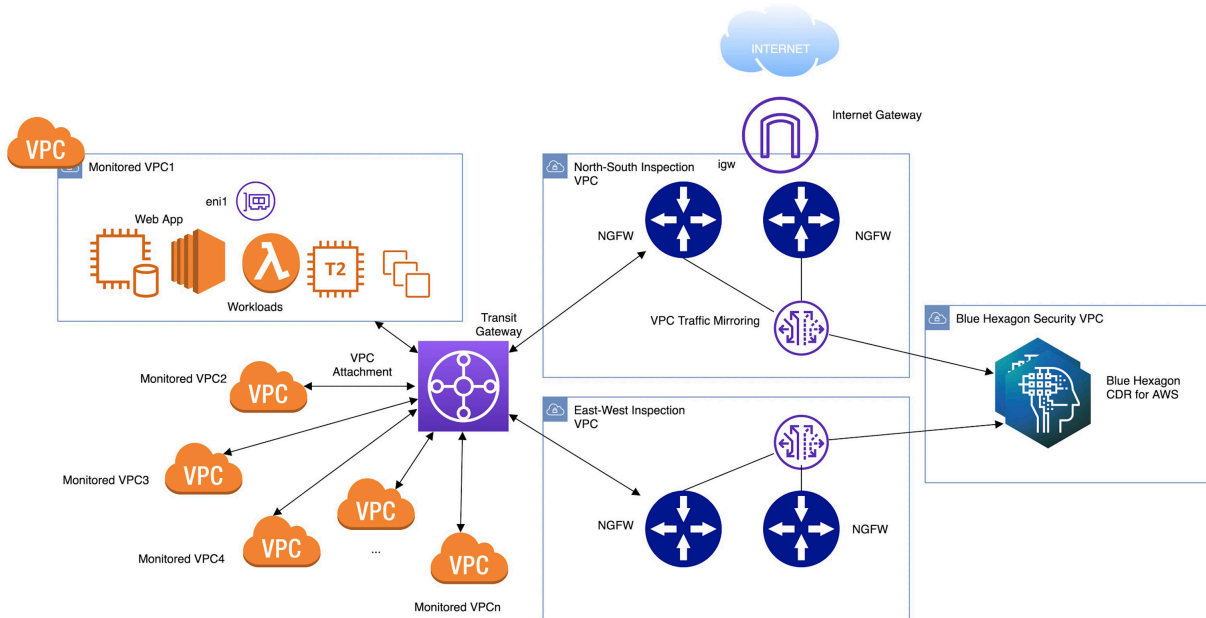


Figure 1: Blue Hexagon Dashboard for multi-cloud hardening and defense

“We needed an AI-powered cloud threat defense and visibility solution that could seamlessly integrate into our cloud infrastructure and deliver high efficacy threat detection not after the fact but in real-time. The addition of Blue Hexagon cloud security solution empowers my security teams to quickly correlate threats across the entire multi-cloud infrastructure. Blue Hexagon provided the most comprehensive cloud platform coverage and highest threat detection efficacy for protecting our cloud deployment.”

Nemi George | CISO, Pacific Dental Services



About Blue Hexagon

Founded in 2017, Blue Hexagon is a deep learning AI innovator of Cloud Threat Detection and Response (CNAPP) enabling enterprises to adopt the public cloud securely, reduce risk and detect & resolve threats faster. Its real-time deep learning AI delivers the world’s highest detection efficacy for 0-day & known threats. Blue Hexagon helps customers Harden & Defend their public cloud through an agentless cloud-native security platform for AWS, GCP, Azure & OCI, powered by Deep Learning. It’s the only AI-powered solution that enables CSPM, CWPP, and CDR in a unified platform for comprehensive protection of public cloud - IaaS and PaaS. Customers can now uniquely prioritize risk, combining both threat detection and misconfigurations, including at pre-deployment and at runtime.

Blue Hexagon is the world’s most recognized AI cybersecurity company and has been widely adopted by leading technology, healthcare and financial organizations. Blue Hexagon helps these customers protect their business and brand against known and unknown threats including zero-day ransomware and malware, C2, cryptomining and insecure apps/code. The multi-cloud agentless solution deploys in minutes and integrates with cloud-native stack to help reduce DevSecOps friction and triage delays for faster remediation.

Blue Hexagon is headquartered in Sunnyvale, CA, and backed by Benchmark and Altimeter Capital. Follow us on Twitter @bluehexagonai or on the Web at bluehexagon.ai.

Headquarters

150 W Iowa Avenue #103
Sunnyvale, CA 94086
<https://bluehexagon.ai>
inquiries@bluehexagon.ai

